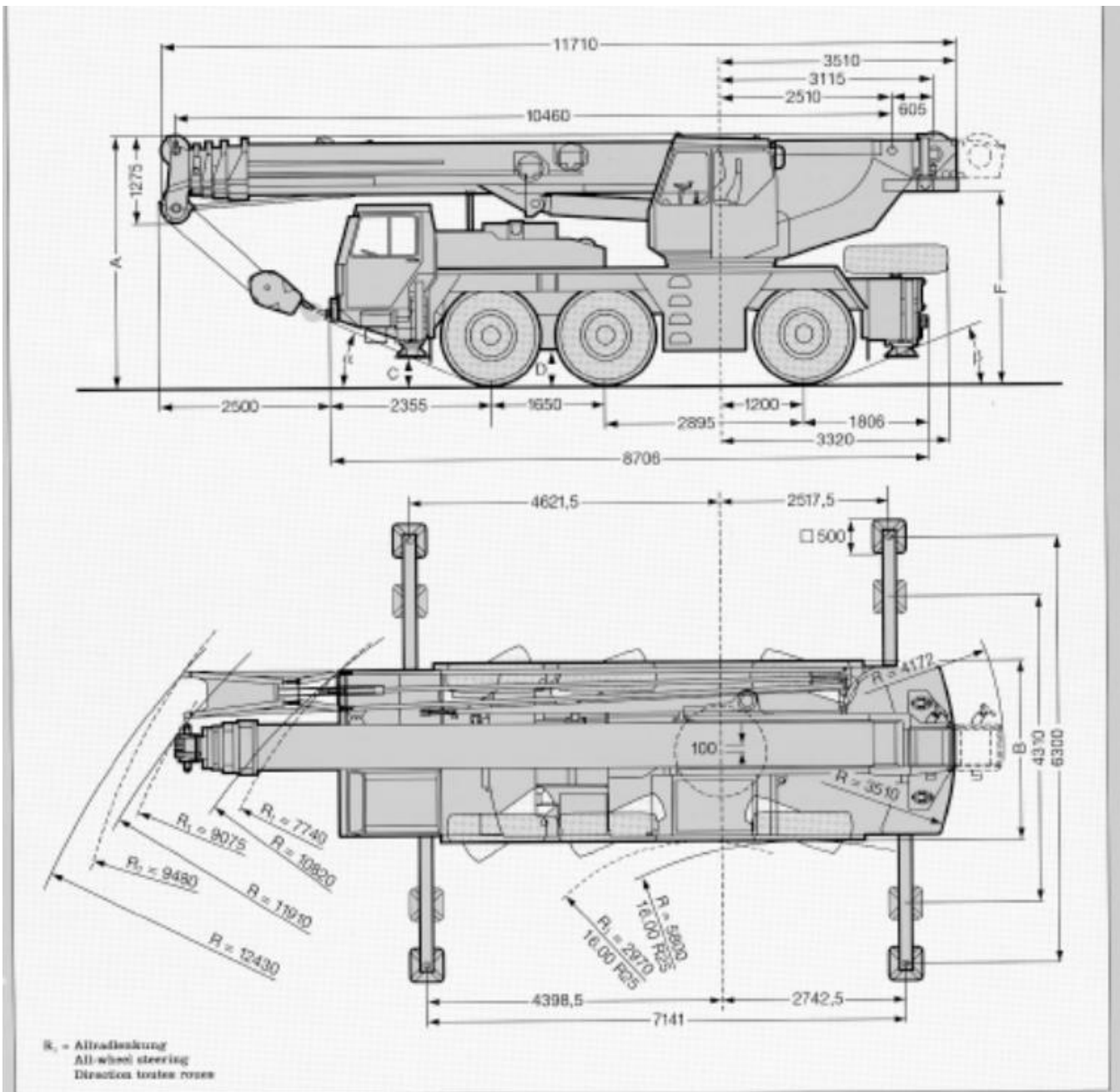




## LIEBHERR LTM 1050/1



⊙	Maße / Dimensions / Encumbrance mm							
	A	A 100 mm*	B	C	D	F	α	β
14.00 R 25	3680	3530	2500	290	410	2787	21°	19°
18.00 R 25	3670	3570	2660	340	460	2781	23°	21°
20.5 R 25	3655	3555	2800	335	445	2766	23°	21°

\*abgesenkt / lowered / abaisse